

**CURVE NO. 1 - B LINE 4**  
 P.I. STA. 334+79.49  
 N: 167740.9367  
 E: 2119533.1681  
 $\Delta = 27^\circ 34' 13.33''$  RT.  
 $D = 5^\circ 29' 21.85''$   
 T = 256.08'  
 L = 502.25'  
 R = 1043.75'  
 E = 30.96'  
 V = 50 M.P.H.

**Curve No. 2 - Ex. Line 4**  
 P.I. Sta. 334+08.56  
 N: 167675.8408  
 E: 2119561.9768  
 $\Delta = 18^\circ 55' 41.41''$  RT.  
 $D = 5^\circ 29' 59.91''$   
 T = 173.66'  
 L = 344.15'  
 R = 1041.75'  
 E = 14.38'

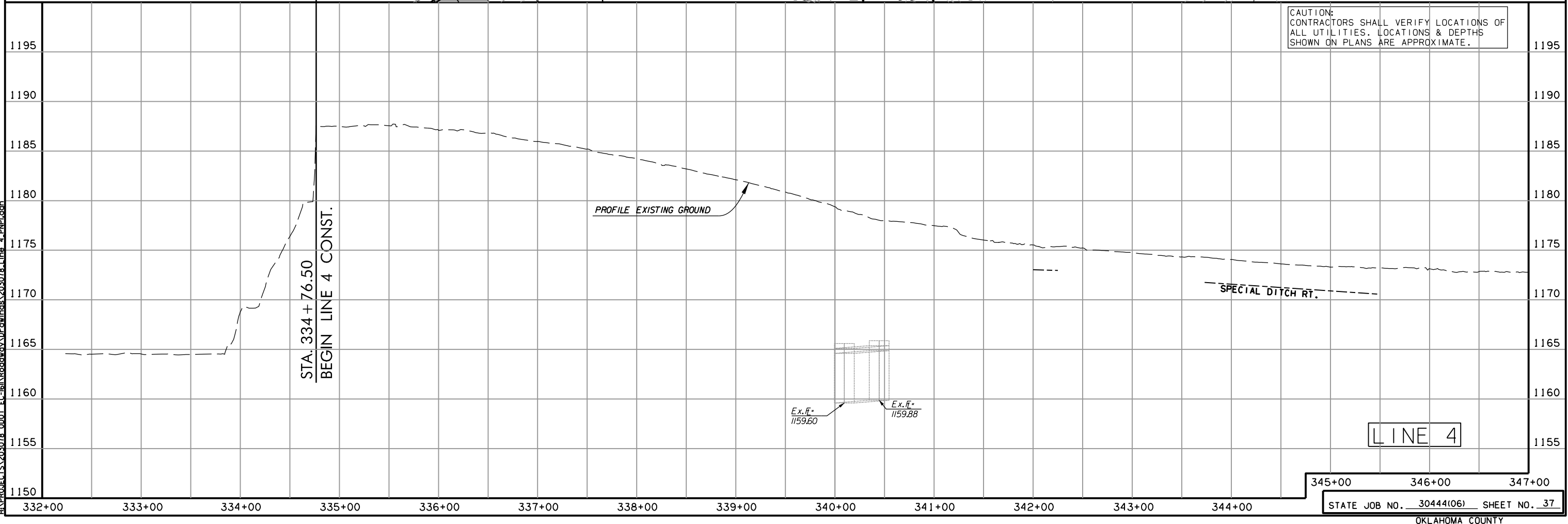
**Curve No. 3 - Ex. Line 4**  
 P.I. Sta. 339+19.68  
 N: 168182.6449  
 E: 2119474.6280  
 $\Delta = 36^\circ 12' 45.25''$  RT.  
 $D = 5^\circ 29' 59.93''$   
 T = 340.62'  
 L = 658.41'  
 R = 1041.75'  
 E = 54.27'

**CURVE NO. 2 - B LINE 4**  
 P.I. STA. 339+81.74  
 N: 168253.0041  
 E: 2119523.0070  
 $\Delta = 27^\circ 34' 13.33''$  RT.  
 $D = 5^\circ 29' 21.85''$   
 T = 256.08'(1)  
 T = 256.08'(2)  
 L = 502.25'  
 R = 1043.75'  
 E = 30.96'  
 V = 50 M.P.H.

**Curve No. 4 - Ex. Line 4**  
 P.I. Sta. 345+59.62  
 N: 168776.1227  
 E: 2119769.6662  
 $\Delta = 48^\circ 26' 10.76''$  RT.  
 $D = 7^\circ 59' 59.90''$   
 T = 322.15'  
 L = 605.46'  
 R = 716.20'  
 E = 69.12'

**CURVE NO. 3 - B LINE 4**  
 P.I. STA. 345+44.65  
 N: 168765.9475  
 E: 2119778.0089  
 $\Delta = 48^\circ 26' 10.77''$  RT.  
 $D = 8^\circ 08' 10.67''$   
 T = 316.75'  
 L = 595.31'  
 R = 704.20'  
 E = 67.96'  
 V = 50 M.P.H.

JOB & ASSOCIATES, OKLAHOMA CITY, OK.					
FED. ROAD DIST. NO.	STATE	JOB PIECE NO.	FISCAL YEAR	SHEET NO.	TOTAL SHEETS
6	OKLA.				
DESCRIPTION		REVISIONS	DATE		



8/31/2017 2:33:13 PM  
 H:\PROJECTS\203078\_0001\_EC-IB\Roadway\Drawings\203078\_Line\_4\_PN1.dwg

**LINE 4**

345+00      346+00      347+00

STATE JOB NO. 30444(06) SHEET NO. 37

OKLAHOMA COUNTY